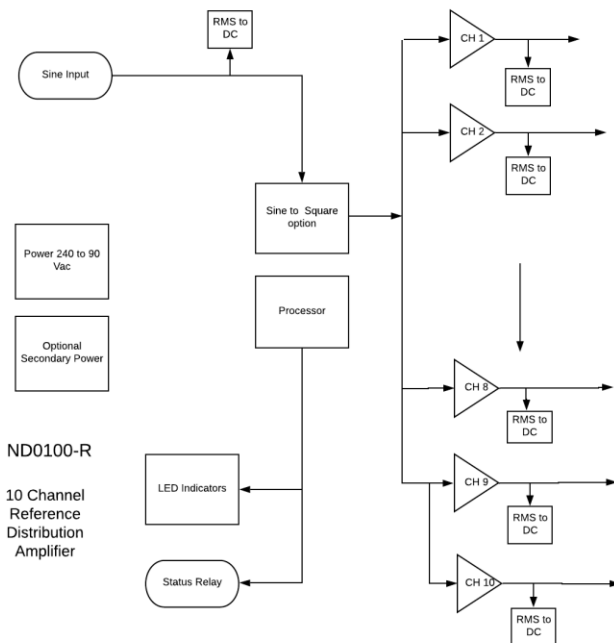


ND0100-R

Reference Distribution Amplifier 5MHz, 10MHz



KEY FEATURES



Low Phase Noise

- 135 dBc/Hz @ 1 Hz
- 145 dBc/Hz @ 10 Hz
- 155 dBc/Hz @ 1 kHz

The NR100D-R is a low cost 10 channel frequency reference distribution amplifier. The unit is optimized for 10 MHz but can be ordered from 1 to 10 MHz. All channels are fault and transient protected. Unit is global AC powered and is also available DC powered or with a DC back-up source. All channels are monitored, and status is displayed with LED indicators on the front panel. Option sine to square converter outputs 3.3 or 5 Volt CMOS capable of driving 50 Ohm loads.



COMPANY DATA SHEET ND0100-R

REVISION K

DATE 9-26-21

Technical Specifications

Technical Specifications		
Frequency	Default is 10 MHz available from 1 to 10 MHz	HB
	Note- for reference applications, BW is limited to reduce noise	
Amplitude	0.2 to 1.2 V rms	
Typical Phase Noise	-145dBc/Hz @ 10 Hz, -155dBc/Hz @ 1 kHz	
Channel Status, System	10 channel status, system status	
Rear Panel Connectors	10 output, Signal-in and system status BNC or SMA, AC power-in	
HI, Low Indicators	Hi \approx 1.8Vrms, Low \approx .4Vrms	
Harmonics	< -30dB	
Impedance	50 Ohm	
AC input	90 to 250 VAC, 50/60Hz, IEC 320-C14	
Alert	20VDCVAC, 0.5 amp relay contacts - relay closed for normal condition.	
DC power Option	-60 to +60 Vdc in three ranges	

Environmental and Mechanical

Environmental and Mechanical		
Operating Temperature	0 to 50°C non-condensing	
Storage Temperature	-40 to 70°C	
Height	1RU (~1.73)	
Width	19.0"	
Depth	12.0"	
Weight	\approx 5.5 lbs.	
AC Input	90 to 250 VAC, 50/60Hz, less than 10 watts	

Options

Options		

This document is copyright © September 28, 2021 Novus Power Products LLC. All rights reserved. This document is provided for information purposes only; contents are subject to change without notice. It is not warranted to be error-free, nor subject to any other warranties or conditions including implied warranties and conditions of merchantability or fitness for a particular purpose.