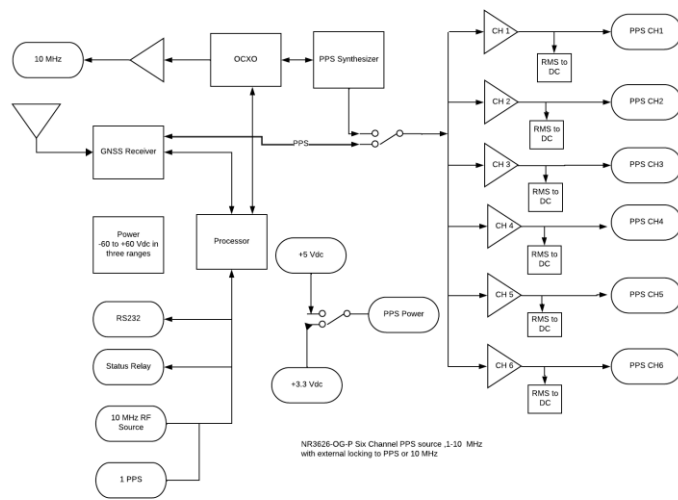


DATA SHEET	NR3626-OG-P
REVISION	A
DATE	040826

## NR3626-O/G-P

**Six channel PPS, GNSS-Locked, 1-10 MHz Sine output  
With External Synchronization capability to PPS or 10 MHz**

### KEY FEATURES



The NR3626-O/G-P is a high performance source of PPS. Unit also offers a single channel of low phase noise 10 MHz.

The 10 MHz output is 13 dBm while the PPS outputs can be 5 or 3.3 Volt logic levels with the capability of driving a 50 Ohm load. The unit may be optionally synced to an external 10 MHz or PPS signal. The priority for each timing source is user settable.

### Product Highlights



#### Six Channels

Six transient and fault protected channels.

#### Versatile Power

-60 to +60 Vdc in three ranges

#### Low Phase Noise

- 155 dBc/Hz @ 10kHz

#### External Synchronization

Locks to GNSS or an external 10 MHz or PPS. User selectable priorities.

DATA SHEET	NR3626-OG-P
REVISION	A
DATE	040826

## Technical Specifications

<b>10MHz sine</b>	13 ±2 dBm, 50 Ohm BNC
Harmonics	Less than -30 dBc
First year frequency stability	±50 ppb (unlocked)
Temperature stability	±10 ppb (unlocked)
<b>Phase noise</b>	
1 Hz	-100
10 Hz	-130
100 Hz	-145
1000 Hz	-150
10k Hz	-155
<b>PPS</b>	
Amplitude for 1PPS	3.3 Vdc CMOS (5 Vdc option) ±100 mA
Pulse width for 1PPS	Programmable 1 to 500ms in 1 ms steps (default 200ms)
Rise time for 1PPS	<2 ns (faster edge available)
Skewing	< 2 ns
Connector	SMA
Load impedance	50 Ohm
Location	rear
<b>GNSS receiver</b>	GPS L1 C/A, GLONASS L1OF, QZSS L1 C/A, SBAS L1 C/A (Ready): Galileo E1B/E1C, QZSS L1S
Channels	26 channels (GPS, GLONASS, QZSS, SBAS)
<b>Sensitivity</b>	
GPS	Tracking: -161 dBm
	Hot Start: -161 dBm
	Warm Start: -147 dBm
	Cold Start: -147 dBm
	Reacquisition: -161 dBm

DATA SHEET	NR3626-OG-P
REVISION	A
DATE	040826

GLONASS	
	Tracking: -157 dBm
	Hot Start: -157 dBm
	Warm Start: -143 dBm
	Cold Start: -143 dBm
	Reacquisition: -157 dBm
	With Novus recommended antenna.
<b>Antenna with LNA</b>	
Antenna power	3.5 Vdc, < 20 mA (on center conductor) (factory configurable to 5 Vdc)
Frequency	1574-1607 MHz
Nominal gain	2 dBic
Amplifier gain	26 dB
Noise figure	< 2.0 dB
Out-of-Band rejection	Fo±50MHz=60 dBc, Fo±60 MHz
DC current	<25 mA@3.5 Vdc
Power requirements	Standard configuration is 12Vdc (9 to 15Vdc) Options- ±24Vdc (20 to 30Vdc), ±48Vdc (40 to 60Vdc) AC adapter available 100 to 240Vac, 50/60Hz
Connectors	BNC 10 MHz output
	BNC 10 MHz input (5 to 15 dBm)
	BNC PPS (3.3 Vdc CMOS)
RS232	DB9 female standard (male option available)
Power connector	4-pin power connector - power in. Mates with On-Shore Tech OSTTJ0411530.

### Environmental and Mechanical

Operating temperature	0 to 50°C non-condensing (extended temperature range available)
Storage temperature	-40 to 70°C
Width	6.0"
Depth	6.0" (exclusive of connectors)
Height	1.58 "
Weight	~16 oz.

<b>DATA SHEET</b>	NR3626-OG-P
<b>REVISION</b>	A
<b>DATE</b>	040826

This document is copyright © April 8, 2026 Novus Power Products LLC. All rights reserved. This document is provided for information purposes only; contents are subject to change without notice. It is not warranted to be error-free, nor subject to any other warranties or conditions including implied warranties and conditions of merchantability or fitness for a particular purpose.